

Comefresh CF-8608 Air Purifier

With Pre-filter, HEPA, Activated
Carbon, UVC, Ionizer

Breathe the difference



Use & Care Instruction Manual

SOLENCO

This product is imported by:

SOLENCO

Solenco SA

Providing Solutions for Environmental Comfort

PO Box 15826

Emerald Hill

Port Elizabeth, 6011

Phone +27(0)86 133 8878


Fax +27(0)86 606 8915

Email: info@solencosa.co.za

<http://www.solencosa.co.za>

SAFETY INFORMATION

Failure to comply with the warnings listed below may result in electric shock, serious injury or death.

 This product should be used only in accordance with the specifications outlined in this manual. Usage other than what has been specified here may result in serious injury.

This air purifier is intended for use in domestic applications only and must not be used in rooms under the following conditions:

- Potentially explosive atmosphere
- Aggressive atmospheres
- Keep away from children and pets: Do not allow children or pets to play with or around the unit, which could result in injury. Be sure the unit is inaccessible to children when left unattended.
- Keep the unit grounded: A grounding plug is an essential safety feature that helps reduce the risk of shock or fire.
- Protect the cord: If the supply cord is damaged, it must be replaced by the manufacturer, its service agent or similarly qualified persons in order to avoid a hazard.
- This appliance is not a substitute for proper ventilation, regular vacuum cleaning or use of an extractor hood or fan while cooking.
- Run on a stable surface.
- Never operate the unit in pooled or standing water. If electrical wiring or components become wet, thoroughly dry them before use. If in doubt, do not use the air purifier and consult a qualified electrician or a Solenco approved engineer.
- Do not clog or block the air intakes by placing the unit too close to obstructions, such as curtains, walls or anything that will restrict the air inlet. This may cause the unit to overheat and result in a fire or electrical hazard. Leave at least 20cm free space behind and on both sides of the appliance and leave at least 30cm free space above the appliance.
- Always use a clean filter. Do not allow any material to clog the filter. Never use without a filter. Always check, and if necessary clean or replace the filter before switching the air purifier on. Do not allow oil, grease or other contaminants to be drawn into the unit. Do not clean the unit with organic solvents. The power light will flicker when the filters have reached the end of their life cycle.
- Always press the "Power" key before unplugging the unit. Always unplug the unit when not in use or moving location. To disconnect, grip the plug and pull from the power socket. Never pull by the cord.

WARRANTY & CUSTOMER SERVICE

There is a one year warranty on your air purifier from the date of purchase.

All material or manufacturing defects will be repaired free of charge.

The following applies:

- Any repairs or replacement of components during the warranty period will not result in an extension of the warranty period.
- The warranty will expire if any alternations have been made, not genuine components have been fitted or if the air purifier has been repaired by a third party.
- Component subject to normal wear and tear, such as the air filter, are not covered by the warranty.
- The warranty is only valid on presentation of the original, unaltered, and date-stamped purchase receipt.
- The warranty does not cover damage caused by actions that deviate from those as described in the user's manual or by neglect.
- The warranty does not cover faults caused by dirt of third party products.
- The warranty does not cover accidental damage.
- All claims for compensation, including consequential damage, will not be entertained.

To prevent unnecessary expenses, we recommend that you always carefully read the user's manual first. If this does not provide a solution, call Solenco SA and we will be happy to help.

This appliance is not intended for use by a person (including children) with reduced physical, sensory or mental capabilities, or lack of experience and knowledge, unless they have been given supervision or instruction concerning use of the appliance by a person responsible for their safety. Children must be supervised at all times.

Please record, for future reference, your date of purchase and where you bought the air purifier.

Date of purchase:

Purchased from:

TROUBLESHOOTING GUIDE

Trouble	Cause	Solution
Unit does not operate / switches off unexpectedly	No power to the unit. On/off not turned ON Front cover not in place.	Plug in the unit; check power at outlet Press the POWER button Securely fit the front cover
Restricted air flow	Dirty filters Blocked inlet/outlet	Clean or replace filters Remove blockage, position further away from furniture, walls, curtains etc.
Excessive noise	Uneven surface Blocked filters Foreign object touching the fan	Only use on a flat, level surface Clean or replace filters Check that nothing has entered the air purifier and is touching the fan.
Odour and smoke are not removed	Dirty filters	Clean or replace the filters if they appear to be heavily soiled.
Discharged air has an odour	Dirty filters	Clean or replace the filters if they are heavily soiled.

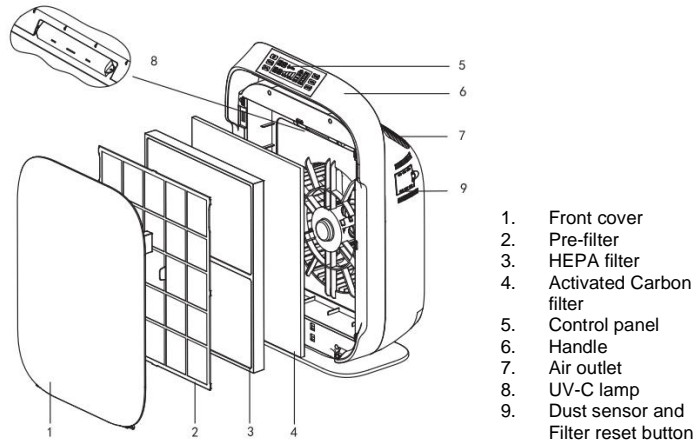
SAFETY INFORMATION

- During the operation the unit must be placed at least 2m away from equipment which involve electric waves such as televisions, radios or wave clocks, in case of electrical interference.
- Repairs must be done by an approved Solenco service engineer. Repairs carried out by unqualified or unapproved persons may cause damage to the unit or injury to persons or property and void the warranty.
- Use appliance only for intended household use as described in this manual. Any other use not recommended by the manufacturer may cause fire, electric shock or injury to persons.
- Do not use outdoors.
- Do not use in a room with major temperature changes, as this may cause condensation inside the unit. Do not use in the bathroom or kitchen, or in other wet surroundings or surroundings with high ambient temperatures.
- Do not place anything on top of the unit and don't sit on the unit.
- Do not attempt to repair or adjust any electrical or mechanical functions on this unit. Doing so will void the warranty.
- The inside of this unit contains no user-serviceable parts. All servicing should be performed by qualified Solenco-approved engineers.
- **WARNING:** To reduce the risk of fire or electric shock, do not use this fan with any solid-state speed control device.
- This product complies with the maximum allowable concentration of ozone of 0.0050 parts per million by volume (ppmv) in a 24-hour period. The Health Canada Guideline 2010 (ISBN 978-1-100-16288-1) recommends that the maximum exposure limit, based on an average time of 8 hours, is 0.020 ppmv or less when tested in a sealed, controlled room of approximately 30m³.

TECHNICAL SPECIFICATIONS

Rated Voltage	230V, 50Hz
Rated Power	70W
Noise level	29dB (L), 45dB (M), 55dB (H), 60dB (Turbo)
UV Light	Wavelength: 254 nanometres Lamp life: Approx. 10 000 hours
Weight	8.3kgs
Dimensions (mm)	445 x 238 x 680
Coverage area	Approx. 50m ²

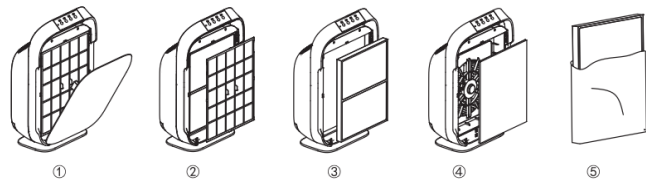
PRODUCT STRUCTURE



1. Front cover
2. Pre-filter
3. HEPA filter
4. Activated Carbon filter
5. Control panel
6. Handle
7. Air outlet
8. UV-C lamp
9. Dust sensor and Filter reset button

SETTING UP AND FIRST-TIME USE

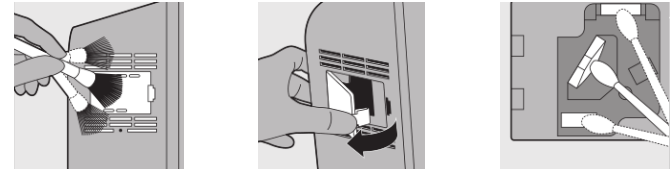
NOTE: The unit comes with all filters fitted inside; however, you have to remove them from the packaging of the filters before using the appliance. Ensure the filters are inserted in the correct position.



- Place your fingers in the recesses of the side panels and gently pull the top part of the front panel towards you. Lift the hooks at the bottom of the panel out of the appliance.
- Remove pre-filter, HEPA filter, Activated Carbon filter.
- Remove all packaging from the filters.

PRODUCT CLEANING

- Make sure the unit is unplugged before cleaning.
- Do not put the appliance in water or use water directly on the appliance to clean it.
- Do not use any corrosive or flammable detergents to clean the appliance.
- Use a soft cloth with mild household cleanser to clean the appliance, ensuring that the appliance is dry afterwards.
- Clean the inside and surface of the appliance regularly to prevent dust build-up.
- Clean the air inlet and outlet regularly.
- Clean the dust sensor with a cotton swab (as pictured below) to maintain its sensitivity.



DUST SENSOR CLEANING

- Clean the dust sensor every month for optimal functioning. More frequent cleaning may be required depending on environmental factors.
- Clean the dust sensor inlet and outlet with a soft brush.
- Open the dust sensor cover.
- Clean the dust sensor, the dust inlet and outlet with a lightly moistened cotton swab.
- Dry with a DRY cotton swab.
- Reattach the air quality sensor cover.

Note: DO NOT use any corrosive or flammable detergents to clean the appliance.

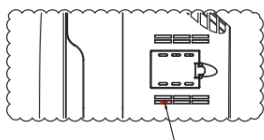
SLEEP MODE WARNING

When pressing the SLEEP button, the sleep mode indicator will light up for 10 seconds, after which all the LED lights will switch off. The air purifier, however, will continue working in its previous setting.

FILTER REPLACEMENT INDICATOR

HEPA filter and Activated Carbon filter change: After operating 4 320 hours (6 months), the REPLACE FILTER light will turn on (blue) indicating that the HEPA filter and Activated Carbon filter need to be replaced. Press the RESET button to reset the light.

Note: The HEPA filter and Activated Carbon filter have a similar lifespan. Therefore they need to be replaced simultaneously.



Reset button

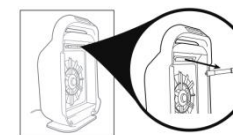
Pre-filter maintenance: The pre-filter can be washed in water. Ensure it is dry before replacing it in the unit. Do not use sharp object to clean the pre-filter as this may damage the filter. The pre-filter can be used for up to 2 years.

HEPA and Activated Carbon filter maintenance: The HEPA and Activated Carbon filters need to be cleaned every 3 months by using the brush attachment of a vacuum cleaner. DO NOT wash these filters. The lifespan of these filters depend on the air quality, application and maintenance.

- Replace Activated Carbon filter in the appliance, ensuring that the side with the strip is facing you.
- Replace HEPA filter in the appliance, ensuring that the side with the strip is facing you.
- Replace Pre-filter in the appliance, ensuring that the side with flange is facing you.
- Reattach the front panel by inserting the bottom hooks first, and then push the panel against the body of the appliance.

UV LAMP REPLACEMENT

- Open the UV lamp cover with a screw driver.
- The UV bulb is removed by carefully grasping the bulb with a clean cloth or tissue and twisting the bulb a ¼ of a turn. Remove from the unit.
- Install the new UV lamp and re-attach the cover.
- NOTE: Do not look at the UV lamp directly when it is operating.

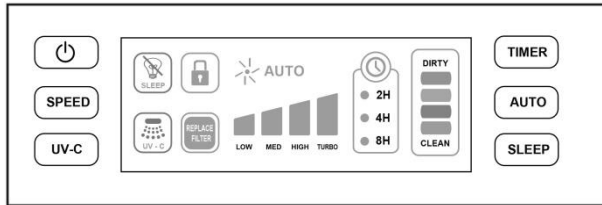


PURIFICATION SYSTEM

Improve your indoor air quality with your new Air Cleaning System. Multiple levels of cleaning include a combination HEPA filter that captures allergens, an Activated Carbon filter to remove odours and UV-C light technology enhances germ-killing.

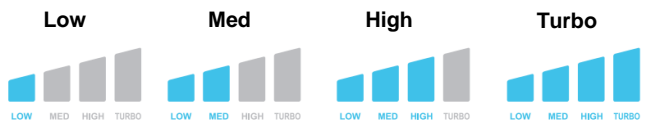
- **Washable Pre-filter:** Traps larger particles, such as human hair, pet hair, feathers, etc. Helps extend the life of the HEPA and the Activated Carbon filter.
- **True HEPA filter:** The high performance composite HEPA filter is over 99.97% efficient in trapping all allergens and airborne contaminants as small as 0.3 micron, including dust, mould spores, plant spores, pet dander, pollen, etc.
- **Activated Carbon filter:** The Activated Carbon filter filters out odours and other VOCs.
- **UV-C:** UV Light (254NM) destroys micro-organisms such as germs, viruses, bacteria and fungi (including mould toxins)
- **Ion:** Negative ions improve air quality by combining with dust or reacting with odour molecules attached to a wall. Negative ions exist in can be found at waterfalls and forests and can bring the air in a room closer to these natural environments.

OPERATION GUIDE

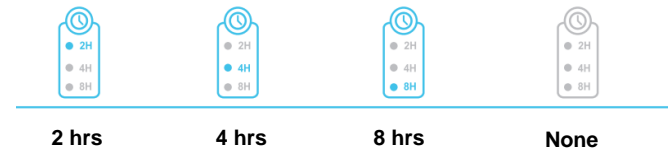


1. **Power button:** press this button to start and shut down the appliance. This will also start and shut down the Ion generator.
2. **Fan speed button:** press this button once or more times to select the desired fan speed. The corresponding fan speed light indicated the fan speed (Low, Medium High, and Turbo).
3. **UV-C button:** press this button and the corresponding light will indicate the UV lamp operation.
4. **Timer button:** press this button once or more times. The corresponding light will indicate the operation time you set.
5. **Auto button:** when this button is pressed the unit will automatically adjust the fan speed according to the air quality.
6. **Sleep mode button:** press this button to switch off the LED light. The appliance will still operate.

FAN SPEED INDICATOR



TIMER INDICATOR



UV-C LIGHT INDICATOR



AIR QUALITY INDICATOR



Red: Dirty
Orange: Bad
Yellow: Normal
Blue: Clean

There are four different colors of the light indicate four level of air quality. The corresponding color of the light indicates the air quality in your room.

AUTO OPERATION INDICATOR



CHILD LOCK MODE



Press and hold the "Sleep" button for 3 to 5 seconds.